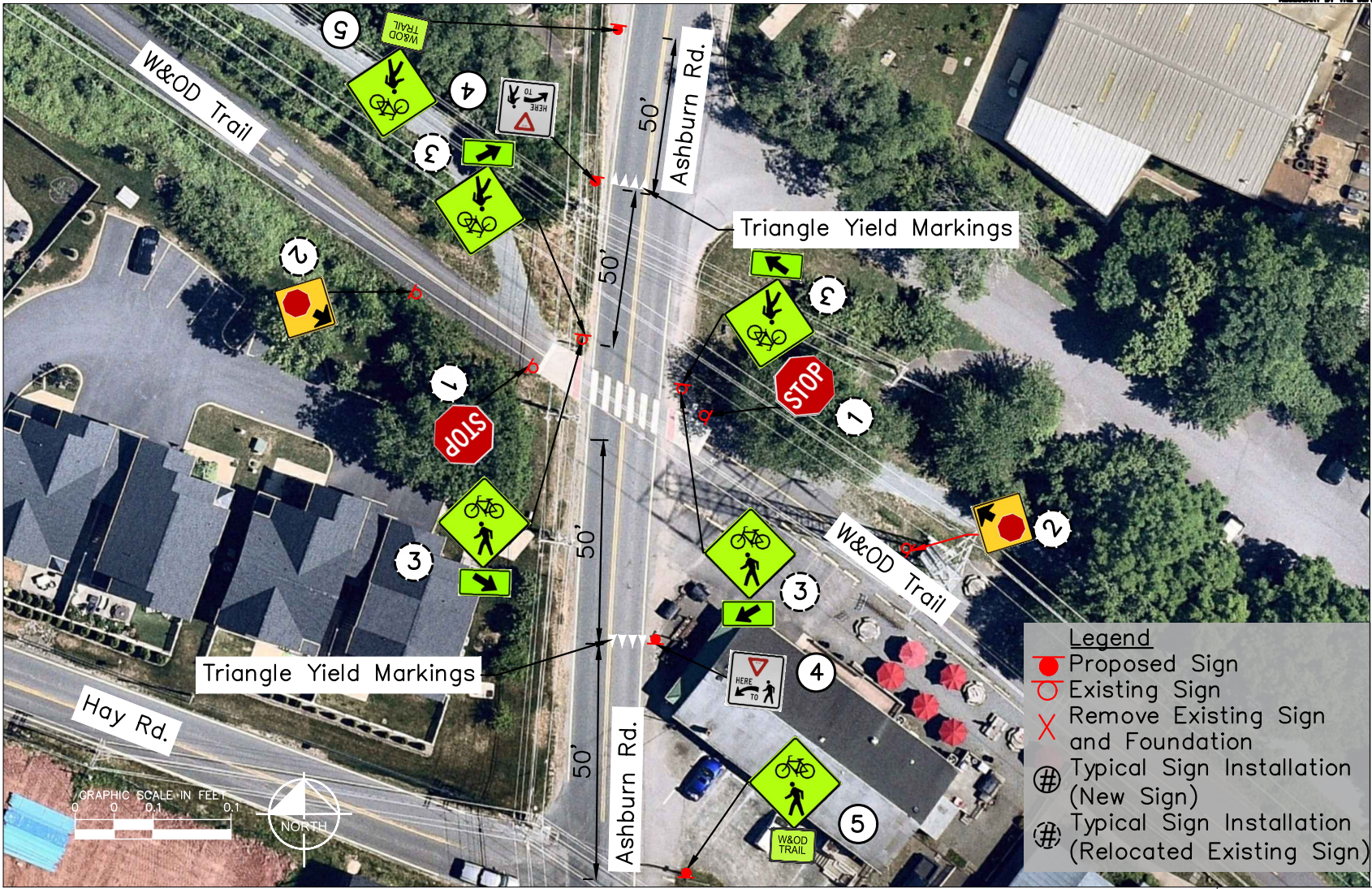


REVISED	STATE	ROUTE	STATE PROJECT	SHEET NO.
	VA.	641	EN20-053-224	15

DESIGN FEATURES RELATED TO CONSTRUCTION OR TO REGULATION AND CONTROL OF TRAFFIC MAY BE SUBJECT TO CHANGE AS DEEMED NECESSARY BY THE DEPARTMENT



Legend	
	Proposed Sign
	Existing Sign
	Remove Existing Sign and Foundation
	Typical Sign Installation (New Sign)
	Typical Sign Installation (Relocated Existing Sign)

Notes:

1. All existing signs to remain unless otherwise noted.
2. See attached Sign Schedule for sign details and typical sign installations.

W&OD TRAIL AT-GRADE CROSSING IMPROVEMENTS

LOUDOUN COUNTY, VIRGINIA

W&OD TRAIL CROSSING AT ASHBURN ROAD

PROJECT	SHEET NO.
EN20-053-224	15