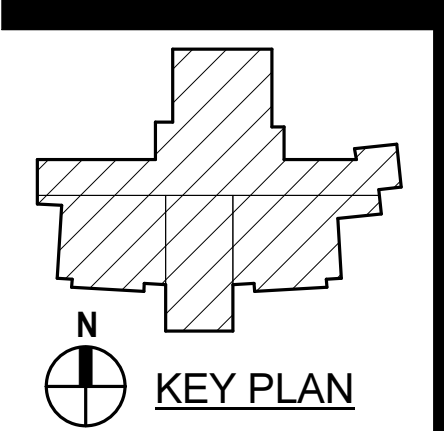
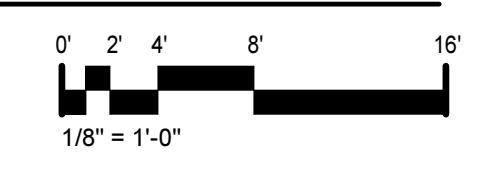
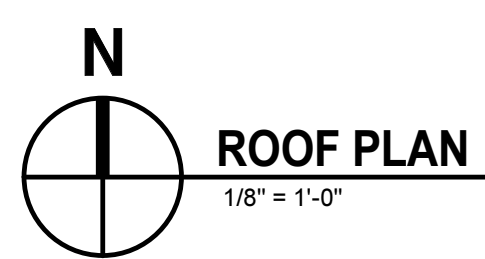


| KEYNOTES | |
|--------------------------|-------------------------------------------------------|
| APPLIES TO DRAWINGS M2.3 | |
| REPRESENTED BY [Symbol] | |
| 1. | ROUTE CONDENSATE PIPING FOR RTU TO NEAREST ROOF DRAIN |
| 2. | PROVIDE EQUIPMENT MOUNTED SCREEN. |



LOUDOUN COUNTY JUVENILE DETENTION CENTER
 42055 GOURLEY TRANSIT DRIVE
 LOUDOUN COUNTY, VIRGINIA

| PROJECT NO. | DATE |
|-------------|---------------|
| 481000 | JULY 15, 2020 |
| DATE | REVISIONS |
| 12/11/20 | ADDENDUM 7 |



ROOF PLAN