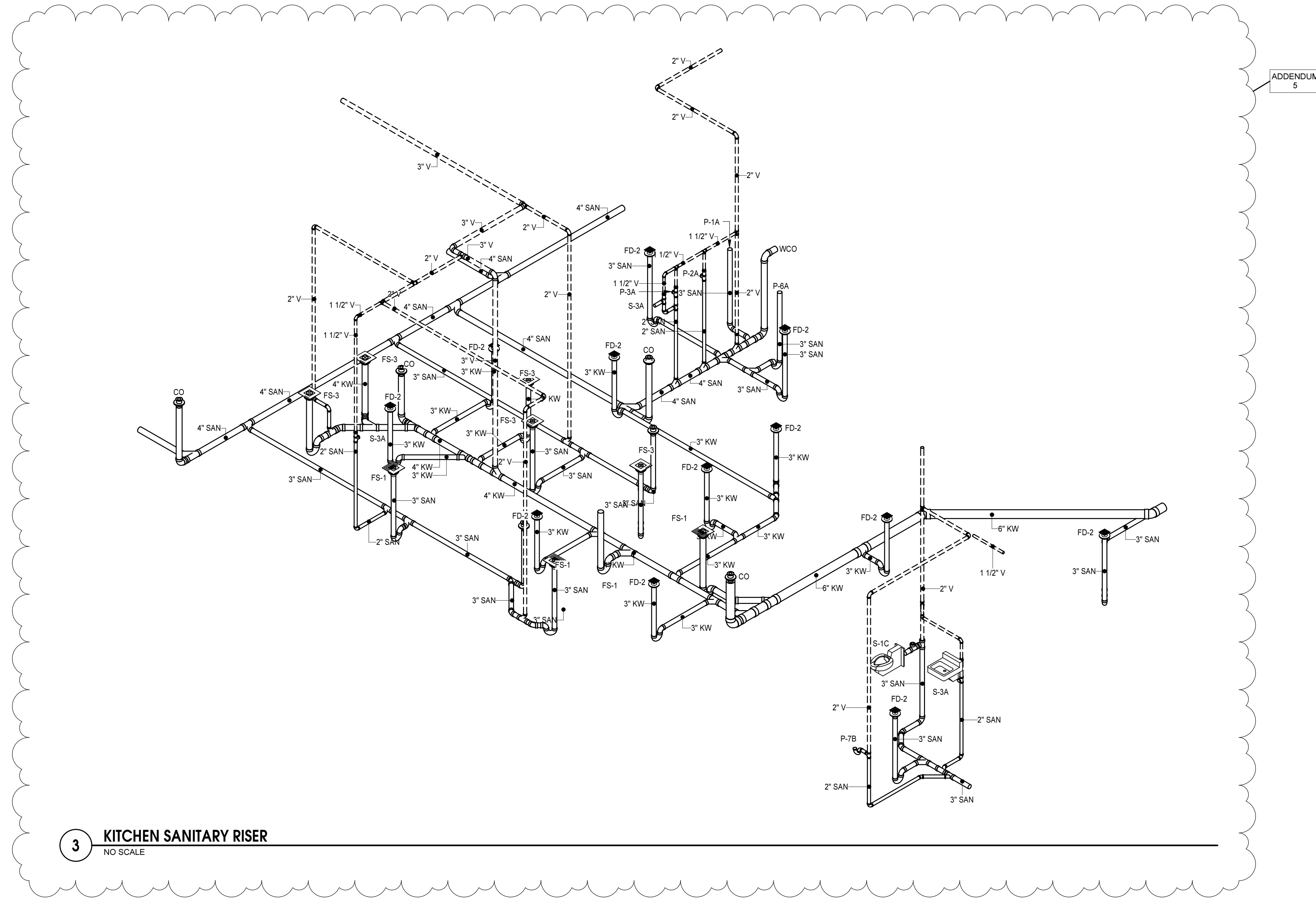
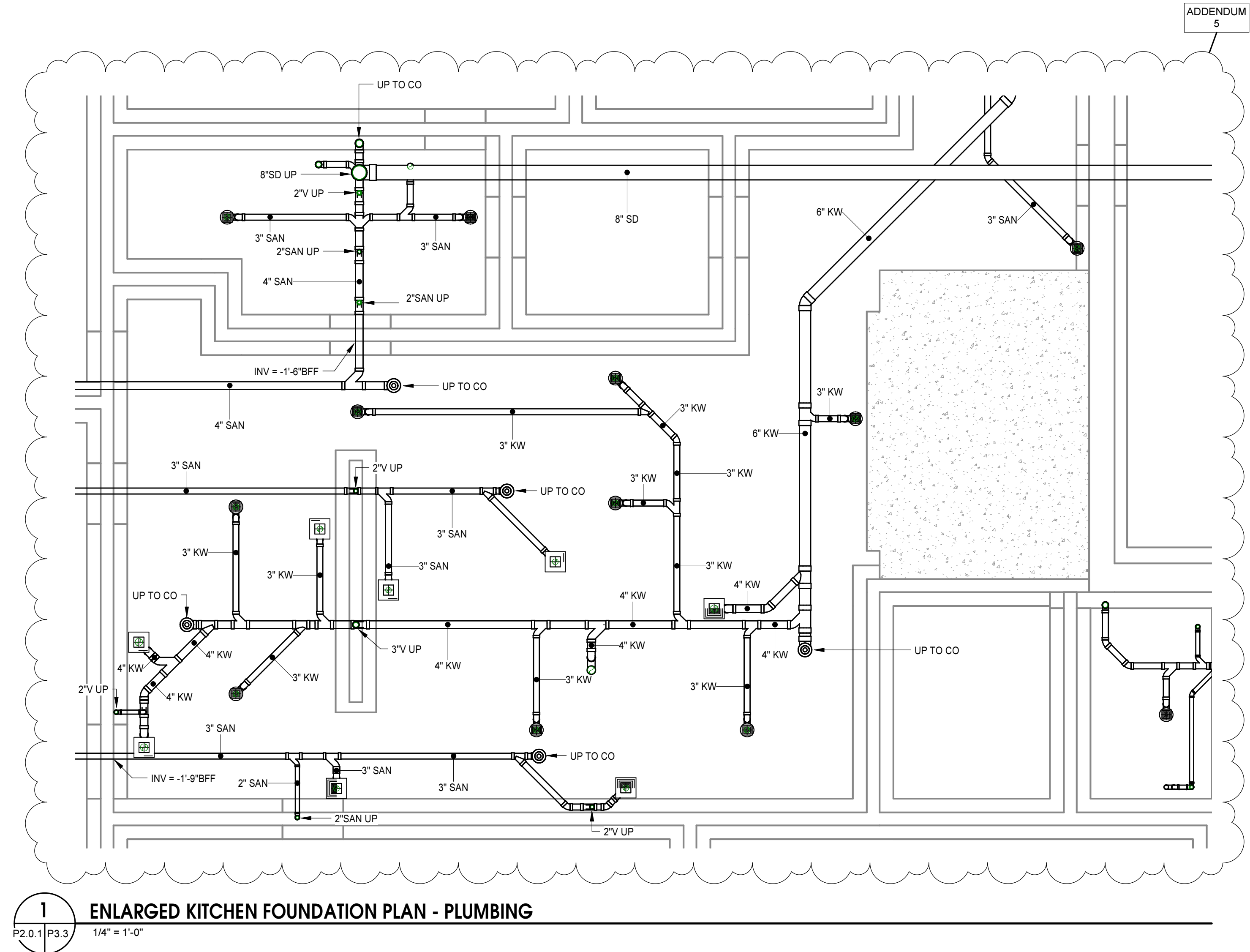


2 ENLARGED KITCHEN PLAN - PLUMBING

P2.1.1 P3.3
1/4" = 1'-0"



3 KITCHEN SANITARY RISER
NO SCALE



1 ENLARGED KITCHEN FOUNDATION PLAN - PLUMBING

P2.0.1 P3.3
1/4" = 1'-0"

PROJECT NO.	DATE
481000	JULY 15, 2020
REVISIONS	DESCRIPTION
11/24/20	ADDENDUM 5

ENLARGED
KITCHEN PLANS
AND RISER

P3.3

LOUDOUN COUNTY JUVENILE DETENTION CENTER

**42055 GOURLEY TRANSIT DRIVE
LOUDOUN COUNTY, VIRGINIA**



MOSELEYARCHITECTS

3200 NORFOLK STREET RICHMOND, VA 23290
PHONE (804) 799-7555 FAX (804) 355-5590
MOSELEYARCHITECTS.COM