

A B C D E
 1 2 3 4 5
 \\slaymencove\projects\50075639\CAD\Civil\Enr\Deliverables\C-03.100 SITE PLAN.dwg
 Wed, Nov 04, 2020 - 5:00:35pm



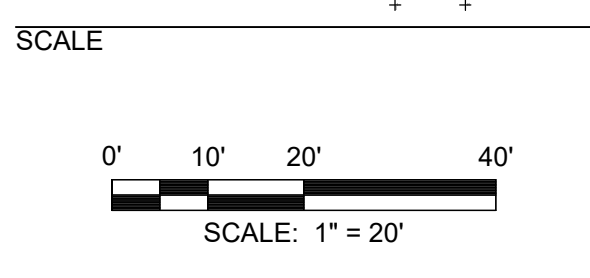
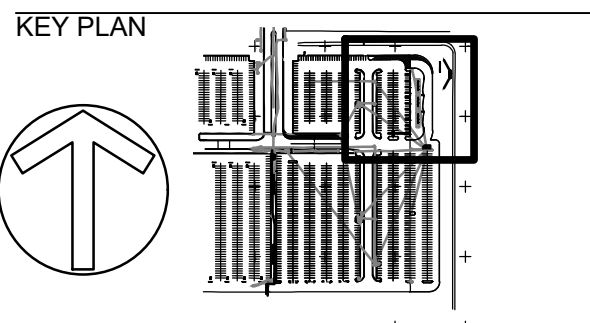
Dewberry Engineers, Inc.
 1503 Edwards Ferry Road
 Suite 200
 Leesburg, VA 20176-6680
 703.771.5004

Ehler Bryan
 8609 Westwood Center Drive
 Suite 800
 Tysons, VA 22182
 703.827.9552

Mueller Associates, Inc.
 1306 Concourse Dr
 Suite 100
 Linthicum, Maryland 21090
 410.646.4500

**DULLES NORTH
 TRANSIT CENTER
 RELOCATION
 SITE PLAN**
 DULLES ELECTION DISTRICT
 LOUDOUN COUNTY, VIRGINIA

SEAL



REVISIONS

NO.	DESCRIPTION	DATE
1	ADDENDUM 1	11/4/20
0	PERMIT SET	9/21/20

DRAWN BY _____ EL, JS
 APPROVED BY _____ DT
 CHECKED BY _____ LR
 DATE _____ SEPTEMBER, 2020
 TITLE

SITE PLAN

PROJECT NO. _____

C-03.101

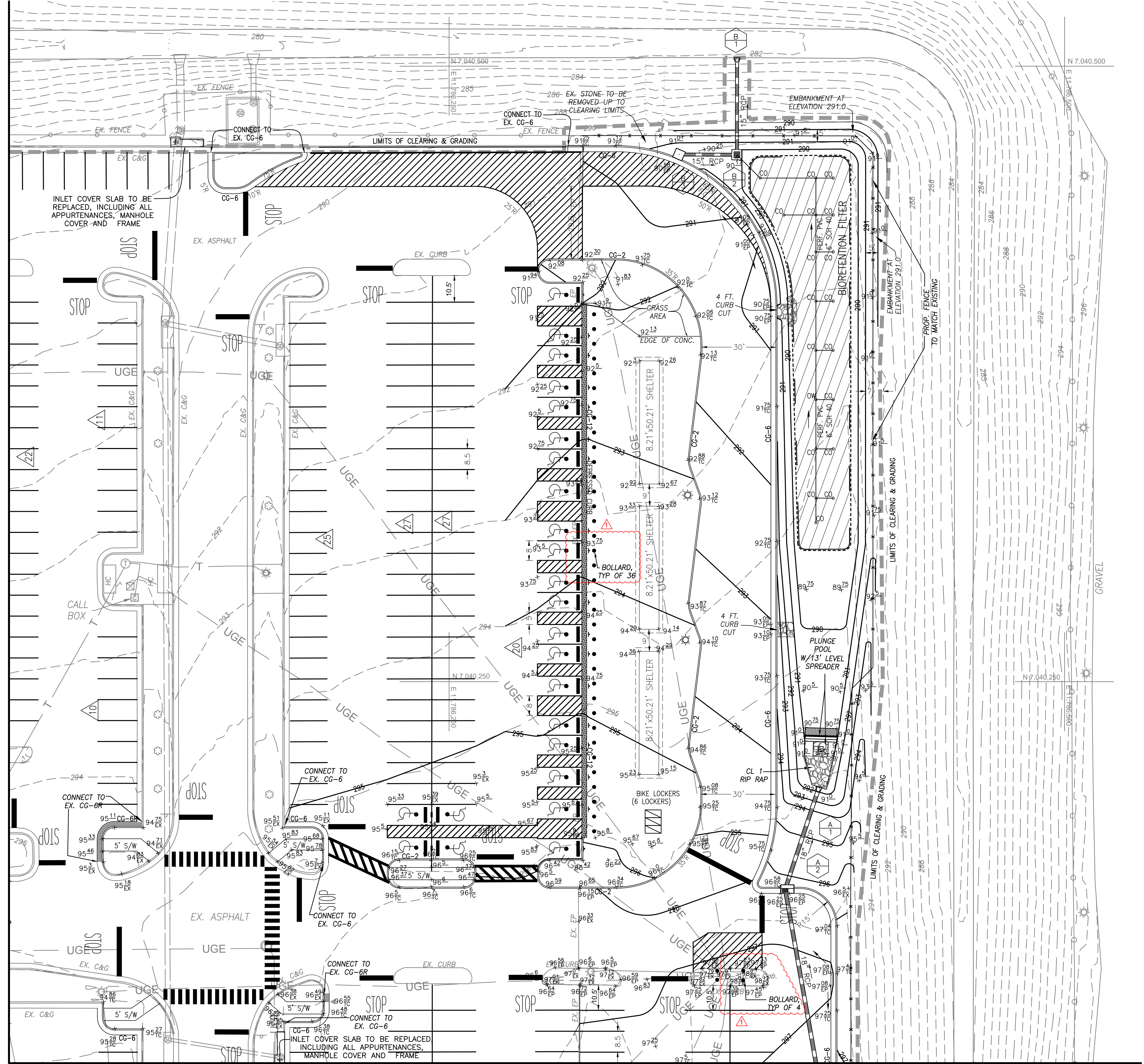
SHEET NO. _____ OF 57

LEGEND

EXISTING EDGE OF PVM'T.	EX. E.P.
EXISTING CURB & GUTTER	EX. C & G
EXISTING STORM SEWER	EX. 15" RCP
EXISTING WATERLINE	W
EXISTING SANITARY SEWER	S
EXISTING U/G GAS	G
EXISTING FENCE	X
EXIST. FIRE HYDRANT	⊙
EXIST. RIP RAP	⊘
EXIST. LIGHT	⊙
EXIST. SIGN	⊙
PROP. CG-6	CG-6
PROP. CG-6 TO CG-6R	CG-6 / CG-6R
PROP. EDGE OF PAVEMENT	E.P.
PROP. STORM SEWER	—
PROP. NUMBER OF PARKING SPACES	△
PROP. RIP RAP	⊘
PROP. INDEX CONTOUR	366
PROP. INTERMEDIATE CONTOUR	368
PROP. SPOT ELEVATION	+54.80

- NOTES:
- WHERE NEW PAVEMENT IS CALLED FOR, CONTRACTOR SHALL SAWCUT ALL JOINTS AND REPLACE WITH ASPHALT SECTION AS SHOWN ON C-02.200.
 - BACKFILL BEHIND CURB WITH APPROVED MATERIAL, SEED, MULCH, AND WATER TO ESTABLISH A 6" STAND OF GRASS. SEE SHEET C-05.100 FOR UTILITY PROFILES.

MATCHLINE-SEE SHEET C-03.100



MATCHLINE-SEE SHEET C-03.103