



Loudoun County Parkway/606 Interim Intersection Improvement Plan As Part of 606 Widening Project

Dear Blue Ridge Resident,

I wanted to keep you informed regarding current plans for intersection improvements at Loudoun County Parkway and Route 606.

Those wishing to keep updated on the project can visit VDOT's project specific site [here](#).

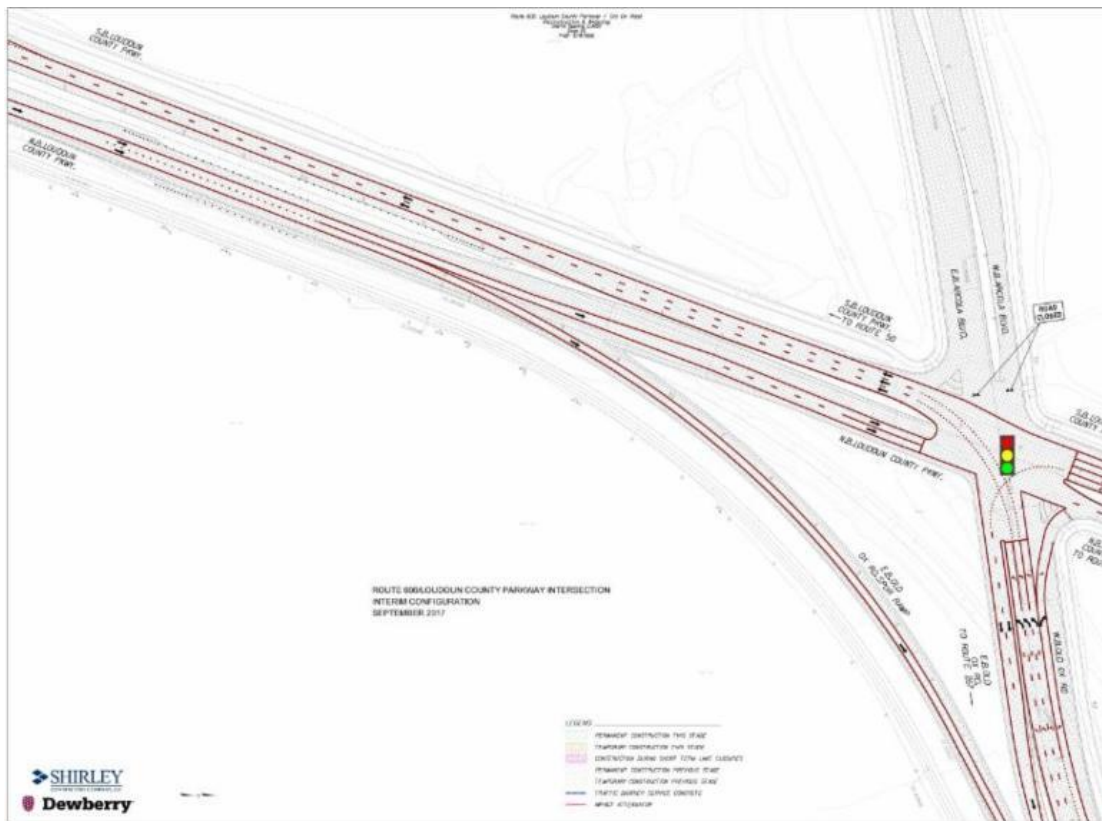
VDOT has been working with the design/build team of Dewberry/Shirley Contracting to implement the Route 606 Widening Project in phases. The pictures below depict the three interim configurations.

September 2017:

The intersection of Route 606/Loudoun County Parkway is scheduled to open to traffic in September 2017 with the following lane configurations:

- Westbound Route 606 traffic turning south on Loudoun County Parkway will be served by triple left turn lanes, which will have to merge into two through lanes.
- Northbound traffic on Loudoun County Parkway traveling eastbound on Route 606 will be served by a single lane ramp. Eastbound Route 606 will be one lane to the Dulles Greenway.
- Traffic continuing northbound on Loudoun County Parkway through the intersection will have to merge into a single lane that is expanded to two lanes through the intersection.

- Southbound Loudoun County Parkway traffic turning eastbound on Route 606 will be served by dual left turn lanes.
- Southbound Loudoun County Parkway traffic continuing through the intersection will have two lanes.
- Arcola Boulevard will remain closed.



December 2017:

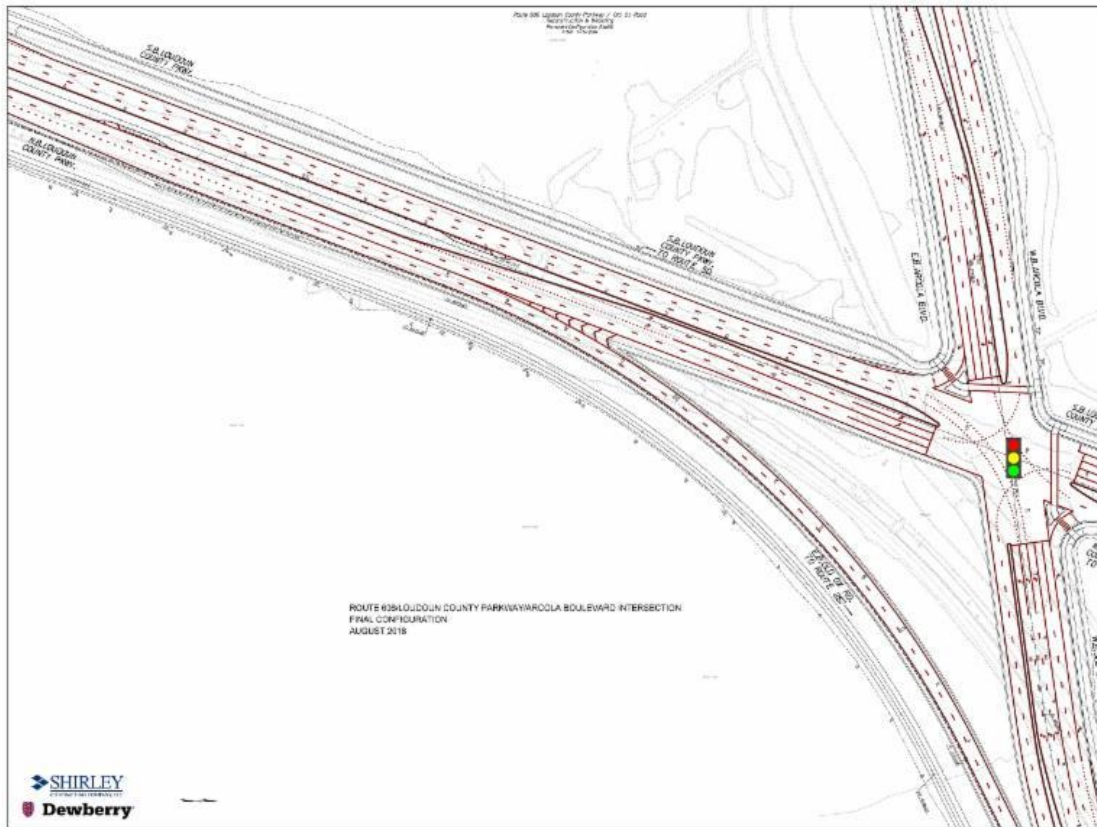
Route 606 is scheduled to open in its new four-lane configuration at the northern and southern ends of the project by the end of 2017. The intersection of Route 606/Loudoun County Parkway will have the following lane changes:

- Two lanes on the ramp from northbound Loudoun County Parkway to eastbound Route 606.
- Two lanes on northbound Loudoun County Parkway through the Route 606 intersection.
- The triple left turn lanes from westbound Route 606 to southbound Loudoun County Parkway will have three southbound lanes on Loudoun County Parkway; the traffic will not have to merge to two lanes.



August 2018:

The entire segment of Route 606, from the Dulles Greenway to Loudoun County Parkway, will be a four lane, median divided roadway. Additionally, a portion of Arcola Boulevard adjacent to Route 606 will be constructed as a four lane median divided roadway with turn lanes to and from Loudoun County Parkway.



All my best,

Tony

Blue Ridge District Supervisor

Supervisor Tony Buffington | Loudoun County Board of Supervisors | 703-777-0210 |
tony.buffington@loudoun.gov | www.loudoun.gov/blueridge

Was this email forwarded to you?

Join My Mailing List



Blue Ridge District, 1 Harrison Street, S.E. 5th Floor,
PO Box 70000, Leesburg, VA 20177-7000

[About our service provider](#)

Sent by tony.buffington@loudoun.gov in collaboration with



Try it free today