



Supervisor Tony Buffington

Blue Ridge District

NewsFlash

Ryan Road Widening Update

Temporary Closure at Beaverdam Drive; Follow Detour

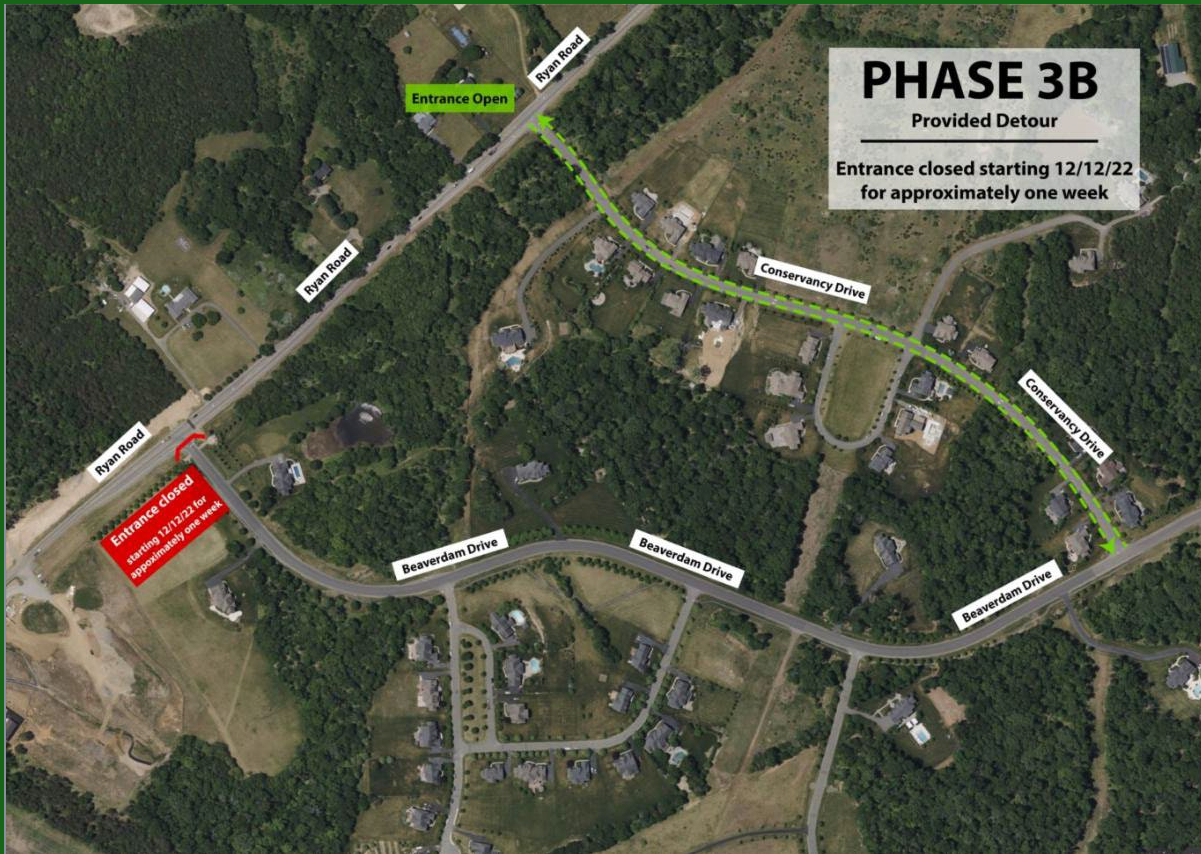
Sent: December 7, 2022

Ryan Road between Northstar Drive and Beaverdam Drive is currently being widened by the Brambleton developer to a four-lane, median divided roadway with a shared use path on the south side of Ryan Road and a trail on the north side of Ryan Road that extends to the golf course.

The developer has made my office aware of a new phase of construction that involves a temporary intersection closure that I wanted to share with you.

Beginning on or about December 12

- There will be a complete entrance closure to Beaverdam Drive at Ryan Road. The entrance will be closed approximately one week, weather permitting.
- The entrance to Conservancy Drive will remain open in its full capacity during this time. Please follow the Phase 3B detour as presented by the developer.



Ryan Road will be open to through traffic during this time. Motorists will not see any additional lane shifts or closures with the exception of closing the Ryan Road westbound right turn lane that allows entrance onto Beaverdam Drive.

Lane shifts will occur with Phase 4 in approximately 2 weeks.

As always, my office will continue to keep you updated as additional information becomes available.

Be safe!

Tony Buffington
Blue Ridge District Supervisor
tony.buffington@loudoun.gov

Christi Maple
Chief of Staff
christi.maple@loudoun.gov

Robin Bartok
Senior Legislative Aide
robin.w.bartok@loudoun.gov

Click [here](#) to Like us on Facebook!



Blue Ridge District | 1 Harrison Street, S.E. 5th Floor, PO Box 70000, Leesburg, VA 20177-7000

Sent by tony.buffington@loudoun.gov powered by

