



Supervisor Tony Buffington
Blue Ridge District
NewsFlash

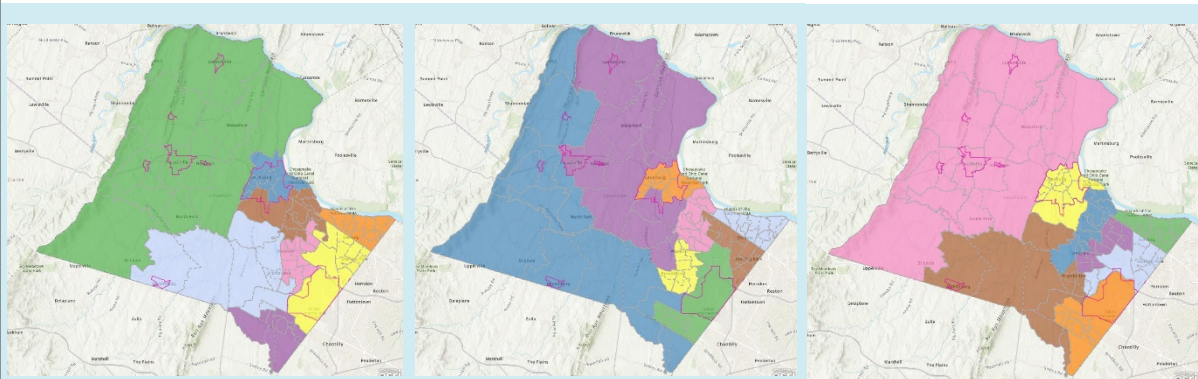


Loudoun Redistricting Process Update

**TOMORROW: Board Expected to Select Only 1 or 2 Options
for Further Consideration...**

Tell Us YOUR PREFERRED PLAN TODAY!

Sent: February 14, 2022



Fechter Plan

COLT Plan
(I RECOMMEND THIS PLAN)

Letourneau/Turner Plan

[View 3 Remaining Plans Here](#)

On January 18th the Board of Supervisors voted to reduce the remaining plan options down to the three plans shown above.



Tomorrow, the Board of Supervisors is expected to further reduce the remaining plan options down to only one or two of the above shown options.

For this reason, NOW IS THE TIME to let the Board know which plan you support and why as it is possible that two of the remaining three plans will be removed from further consideration at tomorrow night's Board meeting.

My goals throughout this process have been to ensure that:

- **Western Loudoun maintains two representatives.**
- **Brambleton HOA is redistricted into an eastern District.**

I'm happy to report that only one of the three currently remaining plans accomplishes these goals. Therefore, I recommend that you consider using this [link](#) to tell the Board that you support the COLT Plan.

Unfortunately, under the Fechter and Letourneau/Turner Plans, most or all of the large suburban community of Brambleton would end up in the same District as the very rural western Loudoun areas of Middleburg and the Village of Aldie, thus making it unlikely that the two distinctly different portions of the same District would receive equal and strong representation by their next elected representative based merely on the likelihood that the representative will not be as familiar with the needs of one of these two very different areas as he or she is with the other.

Tell Us YOUR Preferred Plan Here

Anticipated Next Steps:

- Tomorrow: Board narrows plan options to one or two plans.
- May 11: Board Adopts one of the remaining plans as the Board of Supervisor and School Board Districts until the next Census.
- By July 27, 2022: New District's implemented.

For more information about Loudoun's Redistricting Process click [here](#).



All our best!

A handwritten signature in black ink, appearing to read "Tony Buffington".

Tony Buffington
Blue Ridge District Supervisor
tony.buffington@loudoun.gov

Christi Maple
Chief of Staff
christi.maple@loudoun.gov

Robin Bartok
Senior Legislative Aide
robin.w.bartok@loudoun.gov

Click [here](#) to Like us on Facebook!



Disclaimer: Supervisor Buffington and his staff make every effort to share accurate, timely, relevant and helpful information; however, he nor his staff are liable for inaccuracies, errors, omissions, misrepresentations or otherwise unhelpful or harmful information. The sharing of third party non-County affiliated information is not an endorsement of such information and he nor his staff are liable for inaccuracies, errors, omissions, misrepresentations, or otherwise unhelpful or harmful information from the sharing of such third party non-County affiliated information. Use of the information shared by Supervisor Buffington and his staff is at sole discretion of the user(s), and user(s) accepts all liability and responsibility for his/her/their actions regarding use of the information shared.

Blue Ridge District | 1 Harrison Street, S.E. 5th Floor, PO Box 70000, Leesburg, VA 20177-7000

Sent by tony.buffington@loudoun.gov powered by

