



Supervisor Tony Buffington  
**Blue Ridge District**  
*NewsFlash*

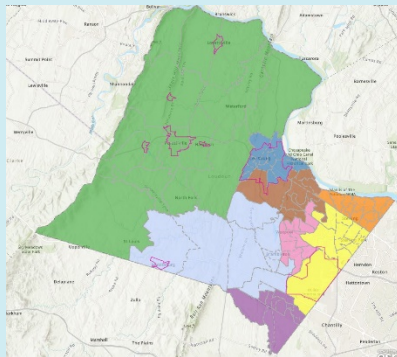


## Loudoun's Redistricting Process

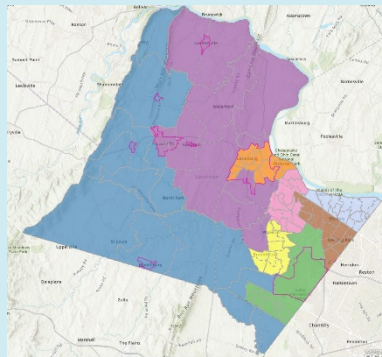
**Only 3 Options Remain...**

**Tell Us YOUR PREFERRED PLAN TODAY!**

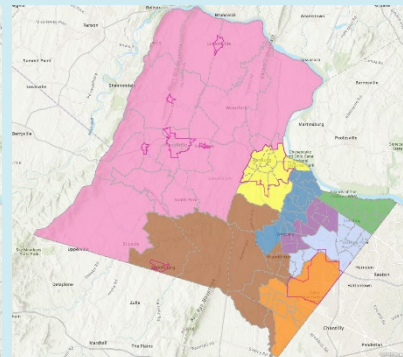
Sent: January 24, 2022



Fechter Plan



COLT Plan  
**(I SUPPORT THIS PLAN)**



Letourneau Plan

**[View 3 Remaining Plans Here](#)**

On January 18th the Board of Supervisors voted to reduce the remaining plan options down to the three plans shown above.

**County staff is currently accepting public feedback on the above three plans.**



Staff will return to the February 15th Board Business Meeting with a list of public comments received, along with results of their analysis and evaluation of the 3 remaining plan options.

It is expected that the Board will select one plan at the February 15th Board Business Meeting, to be forwarded to a Public Hearing in May of 2022.

**My goals throughout this process have been to ensure that:**

- **Western Loudoun maintains two representatives.**
- **Brambleton is redistricted into an eastern District.**
- **Balanced District populations.**

**I'm happy to report that one of the three remaining plans accomplishes each of these goals. Therefore, I recommend that you consider using this [link](#) to tell the Board that you support the COLT Plan.**

Unfortunately, under the Fechter and Letourneau Plans, Brambleton could end up with a representative living in western Loudoun whose completely unfamiliar with the Brambleton community. And neither the Fechter or Letourneau plan does as good a job of providing two properly balanced western Loudoun Districts as the COLT Plan does.

**Tell Us YOUR Preferred Plan Here**

The above links and "Tell Us Your Preferred Plan Here" button result in your completion of a brief comment form that will be tracked by

county staff and included as an attachment for the Board's review at the February 15th Business Meeting. **In addition to completing the above linked form, those wishing to fully ensure their voice is heard can also use this [link](#) to email the full Board of Supervisors directly right now in order to let us know which plan you support.**



All our best!

A handwritten signature in black ink, appearing to read "Tony Buffington".

Tony Buffington  
Blue Ridge District Supervisor  
[tony.buffington@loudoun.gov](mailto:tony.buffington@loudoun.gov)

Christi Maple  
Chief of Staff  
[christi.maple@loudoun.gov](mailto:christi.maple@loudoun.gov)

Robin Bartok  
Senior Legislative Aide  
[robin.w.bartok@loudoun.gov](mailto:robin.w.bartok@loudoun.gov)

Click [here](#) to Like us on Facebook!



**Disclaimer:** Supervisor Buffington and his staff make every effort to share accurate, timely, relevant and helpful information; however, he nor his staff are liable for inaccuracies, errors, omissions, misrepresentations or otherwise unhelpful or harmful information. The sharing of third party non-County affiliated information is not an endorsement of such information and he nor his staff are liable for inaccuracies, errors, omissions, misrepresentations, or otherwise unhelpful or harmful information from the sharing of such third party non-County affiliated information. Use of the information shared by Supervisor Buffington and his staff is at sole discretion of the user(s), and user(s) accepts all liability and responsibility for his/her/their actions regarding use of the information shared.

Blue Ridge District | 1 Harrison Street, S.E. 5th Floor, PO Box 70000, Leesburg, VA 20177-7000

Constant Contact Data Notice

Sent by tony.buffington@loudoun.gov powered by



Try email marketing for free today!