



Supervisor Tony Buffington  
**Blue Ridge District**  
*NewsFlash*



## Loudoun's Legally Mandated Redistricting Process

**UPDATE: Draft Plans Available for YOUR Review & Comment**

Sent: January 10, 2022

[\*\*View the Draft Plans Here\*\*](#)

Several draft redistricting plans (maps) have been submitted for consideration as part of Loudoun County's local redistricting process. As such, the county has made them available online for public review and comment.

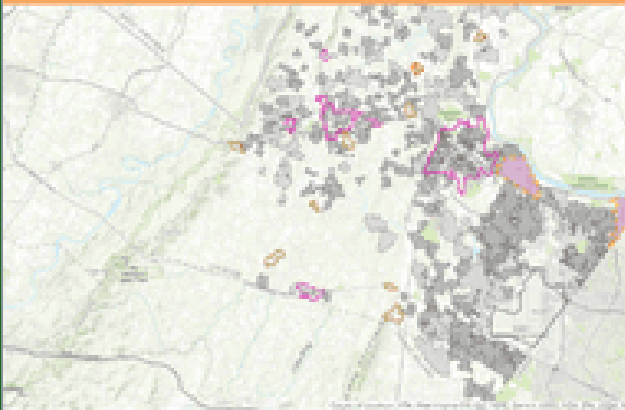
There are currently 20 publicly submitted plans available for your review and comment. In addition to these 20 plans, I have requested that the 7 previously developed staff example plans also be made available for your review and comment. So hopefully, you will have the opportunity to review and comment on all 27 plans.

The Board of Supervisors plans to consider the plans along with all public comment on the plans at our January 18, 2022, meeting. **Please take a moment this week to review the plans and**

[provide your input](#) on which one or ones you like and which ones you don't like so that your voice will be heard as part of this public process.

**Submit YOUR Comments Here**

## **Loudoun County Local Redistricting Update**



**Draft  
Redistricting  
Plans  
Now Available  
for Review**

*View the plans and learn more at:*



**[loudoun.gov/redistricting](https://loudoun.gov/redistricting)**

**Anticipated Timeframe** - The Board of Supervisors is expected to narrow down the number of potential plans at the January 18, 2022, meeting and then refer a short list of plans to staff for further evaluation and refinement.

Mapping staff will assess each plan's impacts on Communities of Interest (groups of people who would benefit from being in a single district) and will analyze how policy areas overlay with proposed plans.

The Board will review the plans again in February of 2022 and select a single redistricting plan in March of 2022 that will be forwarded to a public hearing in May of 2022.

**My goals** - Throughout this process, I will work to ensure:

- Balanced District populations
- Communities of interest are Districted together with similar areas
- **That western Loudoun maintains two representatives on the Board**



Loudoun's redistricting effort will establish new local election districts for the Board of Supervisors and School Board. This legally mandated process occurs every 10 years following completion of the U.S. Census.

The local redistricting process determines how neighborhoods and communities are grouped together into a district for purposes of electing members to the Loudoun County Board of Supervisors and School Board. By making sure districts have approximately the same number of people, redistricting can help to ensure residents have equal representation on the Board of Supervisors and School Board. It also affects for whom residents vote and where they vote, based on how the local electoral boundaries are drawn.

Read the county's latest Redistricting press release [here](#).



All our best!



Tony Buffington

Blue Ridge District Supervisor  
[tony.buffington@loudoun.gov](mailto:tony.buffington@loudoun.gov)

Rachael Holmes  
Chief of Staff  
[rachael.e.holmes@loudoun.gov](mailto:rachael.e.holmes@loudoun.gov)

Robin Bartok  
Legislative Aide  
[robin.w.bartok@loudoun.gov](mailto:robin.w.bartok@loudoun.gov)

Christi Maple  
Legislative Aide  
[christi.maple@loudoun.gov](mailto:christi.maple@loudoun.gov)

Click [here](#) to Like us on Facebook!



***Disclaimer:** Supervisor Buffington and his staff make every effort to share accurate, timely, relevant and helpful information; however, he nor his staff are liable for inaccuracies, errors, omissions, misrepresentations or otherwise unhelpful or harmful information. The sharing of third party non-County affiliated information is not an endorsement of such information and he nor his staff are liable for inaccuracies, errors, omissions, misrepresentations, or otherwise unhelpful or harmful information from the sharing of such third party non-County affiliated information. Use of the information shared by Supervisor Buffington and his staff is at sole discretion of the user(s), and user(s) accepts all liability and responsibility for his/her/their actions regarding use of the information shared.*

Blue Ridge District | 1 Harrison Street, S.E. 5th Floor, PO Box 70000, Leesburg, VA 20177-7000

[Constant Contact Data Notice](#)

Sent by [tony.buffington@loudoun.gov](mailto:tony.buffington@loudoun.gov) powered by

