



Supervisor Tony Buffington
Blue Ridge District
NewsFlash



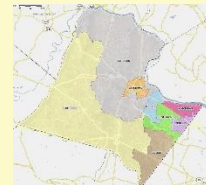
Loudoun's Legally Mandated Redistricting Process

Examples of Local Redistricting Maps Provided

Public Encouraged To Use Redistricting Tool To Submit Recommended Redistricting Maps

Sent: October 22, 2021

The purpose of this email is to encourage your participation in this public process by submitting YOUR recommended redistricting map in November.



Loudoun's redistricting effort to establish new local election districts for the Board of Supervisors and School Board has begun. This legally mandated process occurs every 10 years following completion of the U.S. Census process.

Timeline: The anticipated timeframe for Loudoun's public redistricting process is as follows:

- On October 19, 2021, the Board directed staff to provide example maps and an online redistricting tool to the public by November 1, 2021. ([view .pdf](#) of redistricting process Item presentation from the Board's October 19, 2021, Business Meeting).
- Public access to the redistricting tool will be available November 1-30, 2021.
- Staff to provide Board with map recommendations that have been submitted by the public on January 18, 2022.
- Board considers all options and votes to adopt new election district map in May of 2022.
- Staff submits new Board approved election district map to Virginia's Attorney General for mandated legal review.
- Upon successful Attorney General review, the fully approved map of Loudoun's new election districts is expected to be released by August of 2022.

Process Guidelines: At our June 21, 2021, Business Meeting, the Board approved the following guidelines for the redistricting process:

- All districts shall have equal representation.
- The plan shall comply with the Voting Rights Act.
- All districts must be compact and contiguous.
- The Census shall be the source of date.
- Preserve communities of interest.
- Create districts with similar interest among communities.
- Consider voter convenience and effective election administration.
- Use geographical or physical features, especially arterial roadways.
- **Consider all alternative plans presented by interested groups and individuals.**
- When possible, do not split incorporated towns.

Note: I made a motion at this meeting to add an additional guideline to ensure two western Loudoun supervisors;

however, that motion did NOT receive enough votes to pass and was not included.

My goal: Throughout this process, I will work to ensure that communities of interest and similar areas such as HOA's, neighborhoods, and Policy Areas are kept intact with other similar areas, and to maintain two western Loudoun Supervisors.



I simply can't do this without your help; therefore, I strongly encourage your participation in this very important process!

**Take Action Beginning November 1, 2021:
Use Redistricting Tool to Submit Your Recommended Election
District Map for Consideration by the Board of Supervisors**

VISIT THE REDISTRICTING HUB

The [Local Redistricting Hub](#) was launched September 27, 2021. It provides public access to interactive maps and geographic data that will be of use in developing and evaluating redistricting plans.

The Redistricting Hub will also include the Local **Redistricting Tool**, an online mapping tool to be used by the public when creating and submitting your election district map recommendations to the Board of Supervisor. Beginning November 1, 2021, the public will have an opportunity to view the seven example plans and develop and submit their own plans for consideration within this Tool until November 30, 2021.

Users can start with one or more of the staff-developed examples as a starting point. **The plans available in the Tool are not final options and are only presented as examples!** The user is not restricted in the number of changes that can be made to their redistricting plan.

There will be rolling releases of content on the Hub as additional interactive maps, data, and training materials are developed. Staff is currently analyzing race and ethnicity data included in the 2020 Census and plans to develop a focused interactive map in the upcoming weeks.

All You Need to Know About Loudoun's Redistricting:

VISIT LOUDOUN'S REDISTRICTING PAGE

The main [project page](#) provides information about the redistricting process, including guidelines, links to the online platforms and tools described below, project news, and opportunities for public participation.

The page will be updated regularly with news and information, and individuals can [sign up here](#) to receive email updates on the process.

To submit general comments about the redistricting process, residents are encouraged to [use this comment form](#).

Please participate in this important process by using the online Redistricting Tool to SUBMIT YOUR OWN PLANS in November. County staff will compile your submissions to be presented to the Board of Supervisors during the January 18, 2022, Business Meeting.



All our best!



Tony Buffington
Blue Ridge District Supervisor
tony.buffington@loudoun.gov

Rachael Holmes
Chief of Staff
rachael.e.holmes@loudoun.gov

Robin Bartok
Legislative Aide
robin.w.bartok@loudoun.gov

Christi Maple
Legislative Aide
christi.maple@loudoun.gov

Click [here](#) to Like us on Facebook!



Disclaimer: Supervisor Buffington and his staff make every effort to share accurate, timely, relevant and helpful information; however, he nor his staff are liable for inaccuracies, errors, omissions, misrepresentations or otherwise unhelpful or harmful information. The sharing of third party non-County affiliated information is not an endorsement of such information and he nor his staff are liable for inaccuracies, errors, omissions, misrepresentations, or otherwise unhelpful or harmful information from the sharing of such third party non-County affiliated information. Use of the information shared by Supervisor Buffington and his staff is at sole discretion of the user(s), and user(s) accepts all liability and responsibility for his/her/their actions regarding use of the information shared.

Blue Ridge District | 1 Harrison Street, S.E. 5th Floor, PO Box 70000, Leesburg, VA 20177-7000

[Constant Contact Data Notice](#)

Sent by tony.buffington@loudoun.gov powered by



Try email marketing for free today!