



Supervisor Tony Buffington  
**Blue Ridge District**  
*NewsFlash*

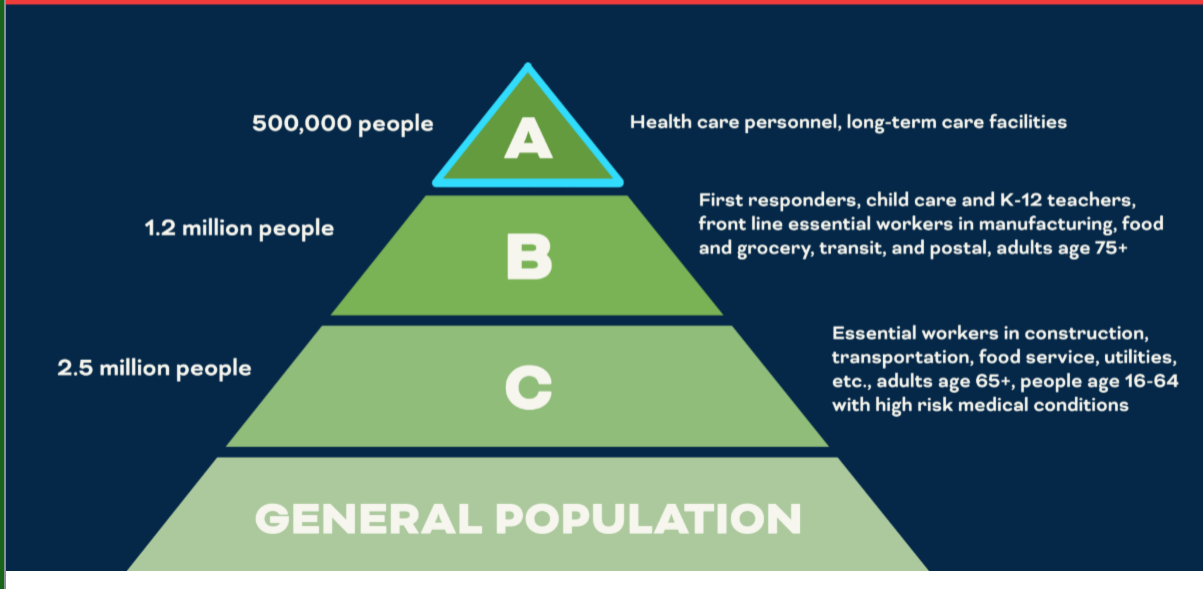


## COVID-19 Vaccine Phase 1b Starts Today

**Are You in Phase 1b? Here's What You Need to Know**

Sent: January 11, 2020

### COVID-19 VACCINE DISTRIBUTION OVERVIEW



Virginia Governor Ralph Northam has provided additional details about the commonwealth's COVID-19 vaccination efforts that will begin to ramp up in the coming weeks. This announcement provides additional clarity to when and where members of the public will receive COVID-19 vaccine when it is their turn.

### **Priority Groups**

To date, the highest-priority members of our community have been receiving COVID-19 vaccine from hospital systems, pharmacies, and Loudoun County government. The "Phase 1a" group includes health care workers, EMS personnel and residents of long-term care facilities.

### **Updated information as of January 11, 2021**

### **Are You in Phase 1b? Here's What You Need to Know**

The Virginia Department of Health (VDH) **announced** that Loudoun County will enter Phase 1b of the COVID-19 vaccination efforts on Monday, January 11, 2021. Loudoun County is working with its community partners—which include pharmacies, health care systems, schools and employers—to help people in Phase 1b know from whom they will receive vaccine, how to make an appointment to receive a vaccine, and where to go to get vaccinated. The community is working together to begin vaccinating people eligible in Phase 1b of the commonwealth's phased vaccination plan as soon as possible, and continues to enroll and vaccinate people in Phase 1a (health care workers and residents of long-term care facilities).

**[View details about Phase 1b from the Virginia Department of Health.](#)**

"We know that our essential workers and older adults are eager to get vaccinated, and we are eager to facilitate vaccination for as many people as possible in the weeks ahead," said Loudoun County Health Director Dr. David Goodfriend. "Right now, we are asking those who are next in line to get vaccinated—those in Phase 1b—to contact their

employer or the Health Department for information about how to receive vaccine.”

### **Who is Eligible in Phase 1b?**

Phase 1b includes essential front-line workers who are defined as essential to the functioning of society and are at higher risk of exposure to the virus. In addition, because there currently is not a sufficient supply of COVID-19 vaccine to vaccinate everyone in Phase 1b at the same time, the Health Department will reach out to members of the 1b group in the following order, which is required by VDH:

1. Police, fire and hazmat workers
2. Corrections and homeless shelter workers
3. Child care/K-12 teachers/staff
4. Food and agriculture workers
5. Manufacturing workers
6. Grocery store workers
7. Public transit workers
8. Mail carriers (USPS and private)
9. Officials needed to maintain continuity of government

People aged 75 and over are also included in Phase 1b because they are at higher risk of serious illness should they contract COVID-19. This older adult population is prioritized to receive vaccine at the same time as the front-line workers listed above. As supplies of vaccine increase, an overlap of vaccination of people in the 1b group will occur to ensure the group is vaccinated as quickly and as efficiently as possible.

The Health Department is coordinating special vaccination events for law enforcement, fire and hazmat, corrections and homeless shelter workers, and public schools employees. There will be no need for individuals working in these sectors to contact the Health Department to schedule appointments.

**[Learn more about the vaccine priority groups on the VDH website.](#)**

## **Where Will I Get the Vaccine?**

Right now, because supply of COVID-19 vaccine is limited, the Health Department will be coordinating vaccination opportunities during the initial expansion into Phase 1b. Initially, the Loudoun County Health Department will be coordinating or providing these vaccinations. As we move forward, vaccine will become increasingly available through people's health care providers and local pharmacies and as a result, Loudoun County ultimately will not be the primary provider of COVID-19 vaccine.

VDH has indicated that as of January 6, 2021, more than 2,000 providers in Virginia have already signed up to distribute COVID-19 vaccine. In addition, Loudoun County will host vaccination events as needed. Loudoun County will announce when each phase of the vaccination process will begin, as well as provide information about vaccination opportunities offered by the county.

## **Vaccine Supply**

The ability to schedule appointments will depend on the supply of vaccine available. Vaccine supply in the United States is still very limited. Currently the federal government is allocating about 110,000 doses of vaccine to Virginia a week and Loudoun County is receiving a portion of the available vaccine. The amount of vaccine available in the United States will depend on the capabilities of the manufacturers to produce the vaccine safely and is expected to increase later gradually over the next months. Following the vaccination of people in the priority Phases 1a, 1b and 1c, vaccination opportunities will be expanded to include everyone else in the general population.

**[View data about the number of vaccines administered in Loudoun County and around Virginia.](#)**

## **How to Sign Up for a Phase 1b Vaccine**

Many members of the Phase 1a and 1b priority group may be enrolled for vaccination by their employers; this is the most efficient way of getting signed up for vaccinations. Employers, members of the 1a and

1b groups who have not been contacted by their employers, and residents over the age of 75, may receive guidance about the vaccination process by contacting the Loudoun County Health Department in one of two ways:

- Send an email that includes your name, organization and basis for inclusion in Phase 1a or 1b to [health@loudoun.gov](mailto:health@loudoun.gov), which is the most efficient way to contact the Health Department;
- If you do not have access to email, you may call Loudoun County's COVID-19 information line at 703-737-8300 between 8:30 a.m. and 5:00 p.m.

### **Future Phase 1c**

*(The below information is from the Loudoun County Press Release issued on January 6, 2021. [Read full release here.](#))*

Phase 1c includes other essential workers, older adults and people with certain medical conditions, such as:

- People aged 65-74
- People aged 16-64 with high-risk medical conditions or disabilities that increase the risk of severe illness from COVID-19
- Utility workers
- Housing construction workers
- Food service workers
- Faculty and staff at institutions of higher education
- Media
- Officials needed to maintain the continuity of government.

View the details about the [vaccination priority groups on the VDH website](#).

Following the vaccination of people in the priority Phases 1a, 1b and 1c, vaccination opportunities will be expanded to include everyone else in the general population.

**Sign Up to Receive Alerts**

Additional information about the ongoing vaccination efforts will be published as it becomes available. To stay informed about when it is your turn to receive a COVID-19 vaccine, residents should sign up to receive text or email updates about COVID-19 from Loudoun County:

- Text LCCOVID19 to 888777 to receive text alerts in English.
- Text LCCOVIDESP to 888777 to receive text alerts in Spanish.
- Sign up for email and text updates on COVID-19 in [Notify Me, Blogs category, "Coronavirus \(COVID-19\)."](#)
- Follow Loudoun County on [Facebook](#) and [Twitter](#).
- Visit the county's website, [loudoun.gov/coronavirus](http://loudoun.gov/coronavirus).

### **Stay Vigilant in Slowing the Spread of COVID-19**

Before and after Loudoun residents receive a COVID-19 vaccine, everyone is encouraged to continue taking the steps that help prevent the spread of the disease, including washing hands frequently, wearing face coverings, social distancing, avoiding large gatherings of people and staying home when sick. Learn more about [COVID-19 prevention and care](#) on the county's website.

---

***Coronavirus - We're in it together, we'll get through it together - Tony***

Be safe!



Tony Buffington  
Blue Ridge District Supervisor  
[tony.buffington@loudoun.gov](mailto:tony.buffington@loudoun.gov)

Rachael Holmes  
Chief of Staff

[rachael.e.holmes@loudoun.gov](mailto:rachael.e.holmes@loudoun.gov)

Robin Bartok  
Legislative Aide  
[robin.w.bartok@loudoun.gov](mailto:robin.w.bartok@loudoun.gov)

Katie Patru  
Legislative Aide  
[katie.patru@loudoun.gov](mailto:katie.patru@loudoun.gov)

Click [here](#) to Like us on Facebook!



**Disclaimer:** Supervisor Buffington and his staff make every effort to share accurate, timely, relevant and helpful information; however, he nor his staff are liable for inaccuracies, errors, omissions, misrepresentations or otherwise unhelpful or harmful information. The sharing of third party non-County affiliated information is not an endorsement of such information and he nor his staff are liable for inaccuracies, errors, omissions, misrepresentations, or otherwise unhelpful or harmful information from the sharing of such third party non-County affiliated information. Use of the information shared by Supervisor Buffington and his staff is at sole discretion of the user(s), and user(s) accepts all liability and responsibility for his/her/their actions regarding use of the information shared.

Blue Ridge District | 1 Harrison Street, S.E. 5th Floor, PO Box 70000, Leesburg, VA 20177-7000

[About our service provider](#)

Sent by [tony.buffington@loudoun.gov](mailto:tony.buffington@loudoun.gov) powered by

